



APPLICATION OF IDENTIUM® MEDIUM

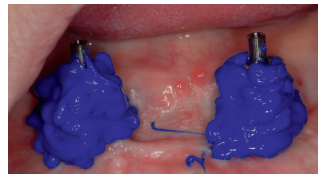
1	Construct a custom-made tray		<p>When using the open tray technique, note the outlets for the fixation screws for the impression posts. Reinforce the outlets with a surrounding sheath.</p>
2	Fix the impression posts on the implant		<p>When using an open tray, the fixation screws should protrude sufficiently through the perforations to ensure good access to the screws once the impression has been taken.</p>
3	Prepare a custom-made tray Apply adhesive 5 min before taking the impression (Follow the manufacturer's instructions!).		Identium® Adhesive (for Vinylsiloxanether®) Warning: Use only the adhesive that is recommended for the impression material.
4	Assess the oral situation With residual teeth, block out any severe undercuts.		Wax or other block-out materials
5	Fill application syringe Pass the filled application syringe to the clinician and immediately continue with step 6.		Applyfix 5 Avoid air inclusions when filling. When using an application syringe, ensure that no impression material residue remains in the syringe. After injection of the material, the filled impression tray must be inserted immediately. The oral temperature accelerates the setting of the material.
6	Mix the impression material Homogeneously mix the Identium® Medium and fill the custom-made tray. Leave the mixing tip in the material to prevent bubbles.		Identium® Medium , Sympress Dispenser When using the cartridge for the first time, ensure that the mixture is homogeneous. At least the first 3 cm should be discarded once.



7

Inject around the impression posts

The posts must be completely surrounded by the material.



Identium® Medium

Note the total processing time. Leave the application tip in the material to prevent bubbles.

8

Insert into and remove from the patient's mouth

Insert the filled impression tray into the patient's mouth and hold in position until the material has set. With the open tray technique, loosen the fixation screws of the transfer posts before removal. Clean and dry the impression.



Warning: Do not hand the impression tray over to others! Note the setting time of the material! Do not fully depress the tray to the base.

9

Check and, if necessary, reposition the impression posts

Check that the transfer posts are correctly positioned.



10

Disinfect the impression

Follow the manufacturer's instructions.



It is recommended to carry out an immersion disinfection, which involves wetting the surface entirely. A contact time of 10 minutes must be adhered to.