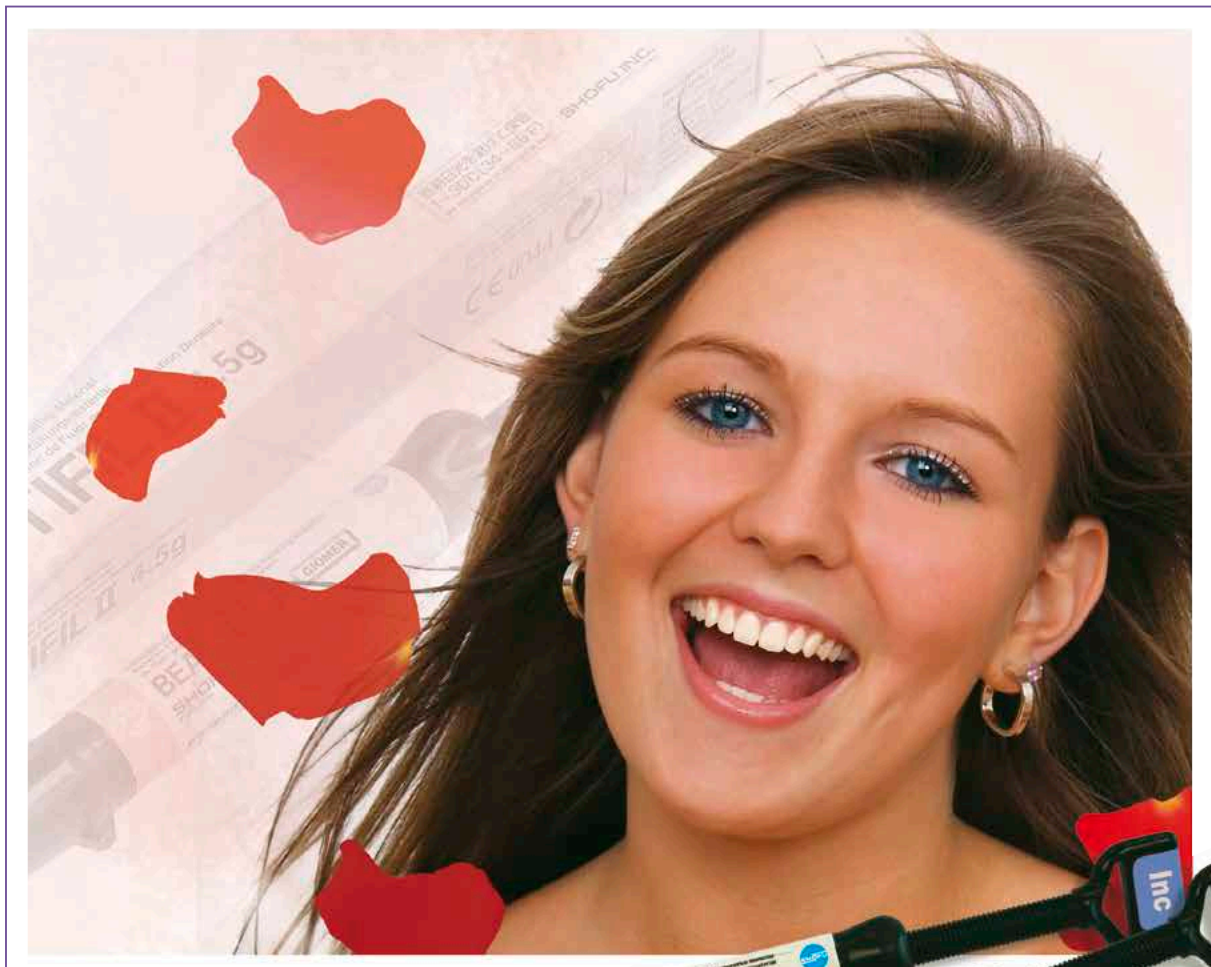


BEAUTIFIL II

Continually Fluoride Releasing
Aesthetic Dental Restorative Material



PRG
Technology
Giomer



Research is our best product





BEAUTIFIL II

More than just filling

Beautifil II stands out for its aesthetic appearance with excellent colour harmonisation, exceptional handling properties and its anti-plaque effect. The patented filler technology integrates the light transmission and diffusion properties of natural teeth. This enables naturally appearing restorations with even one layer.

Beautifil II has the ability to continually release fluoride and offers patients effective protection against secondary caries. This property can be further enhanced to a double fluoride release with SHOFU's FL-Bond II, a 2-step self-etching, fluoride releasing bonding system.

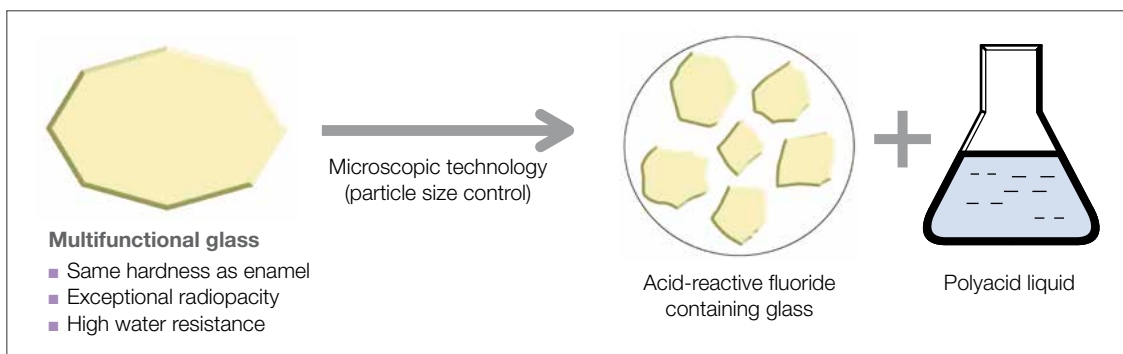
The hardness of the glass filler used as raw material of Beautifil II is similar to that of enamel and is antagonist-friendly. The material is therefore suitable for both anterior and posterior teeth.

In addition, Beautifil Flow and Beautifil Opaquer are flowable and masking variations for an expanded field of application.

Giomer

As a Giomer, Beautifil II is based on the PRG (Pre-Reacted Glass ionomer) technology. The inorganic filler consists of pre-reacted micro-glass particles. By integrating the reaction into the manufacturing process, a stable glass ionomer phase is formed on the surface of the glass particles. Any further reaction in the oral environment (water absorption) is excluded. The S-PRG fillers (Surface Pre-Reacted Glass ionomer) give the composite specific features, such as the recharge and release of fluoride or the anti-plaque effect, without impairing its physical parameters.

Production process

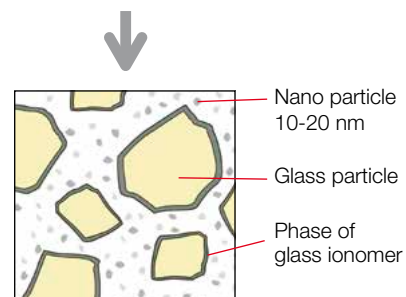


S-PRG technology

SPECIAL FEATURES

- Fluoride release and recharge
- Aesthetics close to natural teeth
- Anti-plaque effect
- High level of radiopacity
- Long term clinical stability
- Resistance to wear of posterior teeth

Reaction on the surface



S-PRG Filler

S-PRG filler

+

Resin

PRG
Technology
Giomer

BEAUTIFIL II

Release and recharge of fluoride

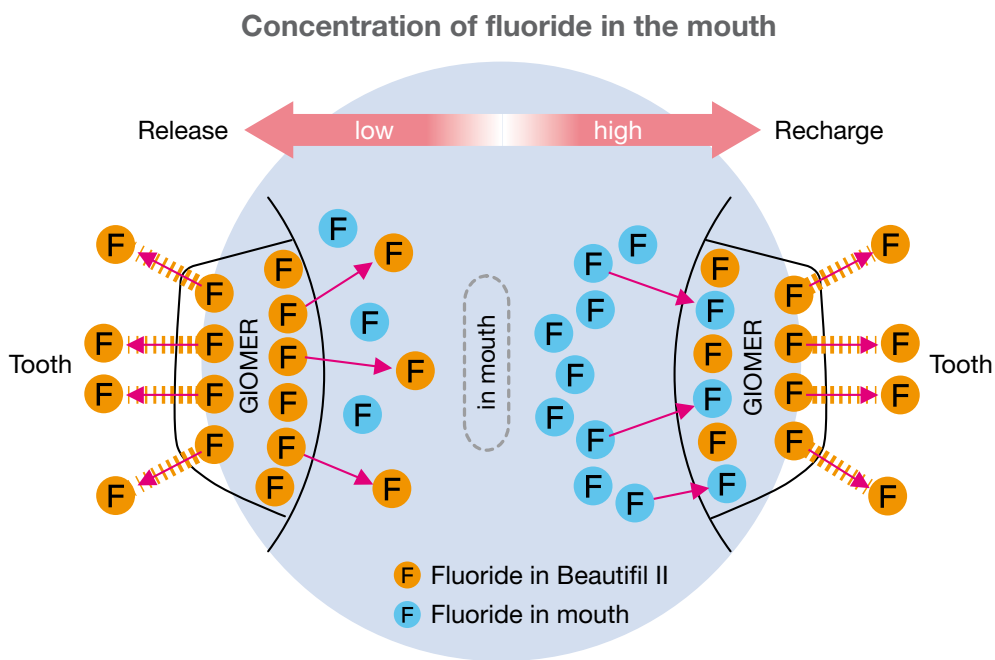
The S-PRG fillers contained in Beautifil II have the ability to release and recharge with fluoride depending on the fluoride concentration in the mouth. The strength and stability of the composite remain unaffected.

The release of fluoride takes place exactly where the effect can best develop. This means that the adjacent contact areas of the natural hard tooth structure are effectively protected from caries due to permanent local remineralisation.

Beautifil II recharges with fluoride ions via external sources such as fluoride rinses, professional treatment or toothpastes.

This property and effect was clinically proven in an 8-year study.*

The use of the coordinated bonding agent FL-Bond II enhances the release of fluoride and improves the protection against caries.

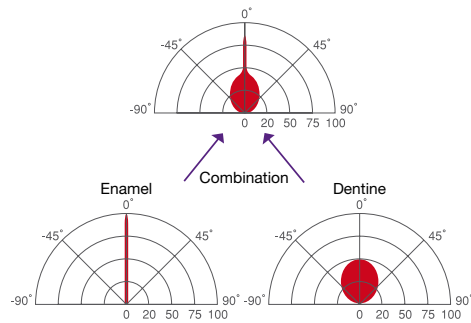
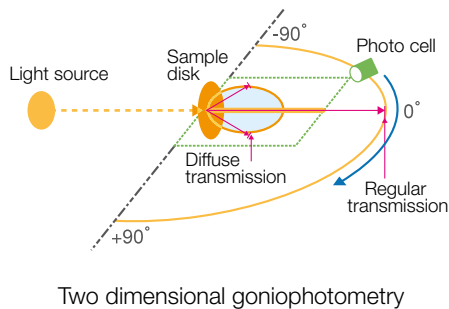


* Gordan V.V., Mondragon E., Watson R.E., Garvan C., Mjör I. A.:
A clinical evaluation of a self-etching primer and a giomer restorative material. Result at eight years.
J Am Dent Assoc 138: 621-627 (2007)
(Available on request)

Characteristic features

Conducts light naturally

Beautiful II can recreate the effects of light transmission and diffusion of natural teeth due to its unique filler technology. Thanks to the perfect adaption you will achieve invisible restorations with the optical features of natural teeth.



Colour stability

The shade of Beautiful II negligibly differs during modelling as well as before and after curing.

This ensures the right colour match even while layering.



Recommended use of colours

Beautiful II comes in 12 different colours.

The universal colours A1, A2, A3, A3.5, A4, B1, B2, B3, C2 and C3 have been specially designed for a rational layering technique.

In addition, the opacous dentine colours A20 and A30 are particularly suitable for multicolour layering.

The enamel shade Inc offers highest translucency for aesthetically demanding anterior tooth restorations.

For the treatment of bleached teeth, use the Bleaching White shade BW.

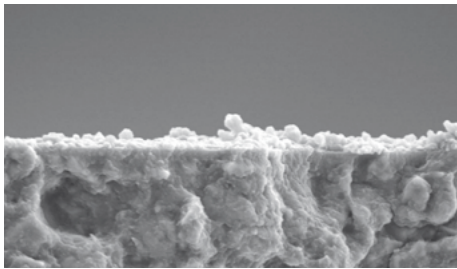
The indicators of the shade guides are made of genuine Beautiful II composite. They simulate the thickness of natural teeth to simplify the determination of the shade.



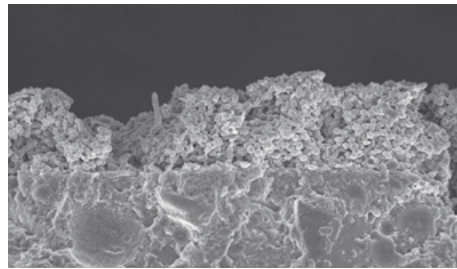
Anti-plaque effect

On the surface of a tooth, restored with Beautifil II, a permanently regenerating layer is formed by the saliva. The layer minimises plaque adhesion and bacterial colonisation.

Although this layer may be removed, for example by teeth cleaning, subsequent protective layers are reproduced by the saliva.



Beautifil II (with S-PRG fillers): sporadic plaque formation



Conventional composite resin (without S-PRG fillers): extensive plaque formation

Image provided by Prof. Koji Yamamoto,
ASAHU University

Optimum polishability

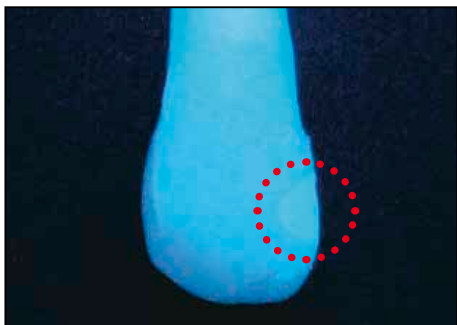
Due to the average particle size of $0.8\ \mu\text{m}$ and the integration of nano-fillers (10-20 nm), Beautifil II is quick and easy to polish.

The homogenous surface supports the anti-plaque effect.



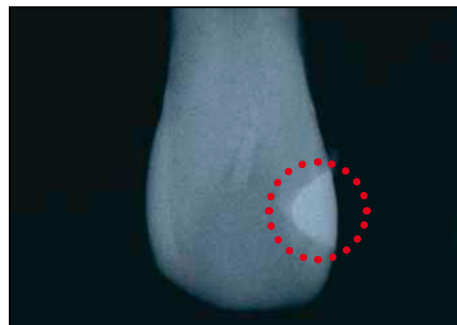
Fluorescence

The fluorescence of Beautifil II is similar to that of natural teeth. The impact of visual influences such as UV light is minimised.



Extraordinary radiopacity

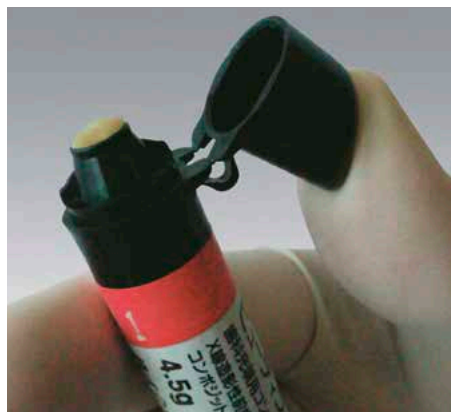
The radiopacity is 1.7 times higher than enamel and 3 times higher than dentine and permits reliable visual X-ray diagnostics.



Outstanding handling properties

Beautiful II is easy to form and can easily be attached to the prepared hard tooth structure. The viscosity of the material, which is only slightly dependent on temperature, ensures stable modelling properties without sticking to the instruments.

The "one-touch cap" of the syringe has been enhanced for easy dispensing and accurate application.



Reliable strength and durability

The homogenous microstructure of Beautiful II, with its high filler loading, ensures excellent physical properties with long-term stability and a high degree of flexural strength. These outstanding material properties have been clinically proven and documented in an 8-year study (see page 5).

Physical properties

Compressive strength	Flexural strength	Vickers Hardness	Wear resistance	Filler loading	Average filler size	Radiopacity	Fluoride release and recharge
330 MPa	130 MPa	62 HV	0.52 weight %	83.3 weight %	0.8 µm	3.4 Al:mm	yes

(In-house data: SHOFU Inc., R&D Dept.)



Confidence starts here

Before restoration



After restoration



Images provided by Dr. Sushil Koirala

Indications

Direct restorations that demand highest aesthetics and biocompatibility such as:

- Restorations of class I to V cavities
- Restoration of cervical erosion and root caries
- Repair of fractured incisal edges
- Veneers and posts
- Direct cosmetic repairs



System components

Beautiful Flow – Beautiful Opaquer – FL-Bond II

The flowable versions **Beautiful Flow** increase the range of indications. The moderately viscous F02 and the smooth-flowing F10 are coordinated to match the colours of Beautiful II precisely.

Our **Beautiful Opaquer** is available in two colours for masking discolourations, even with very thin film layers.

Beautiful Flow		Beautiful II
F02	F10	
A3	A3	A3

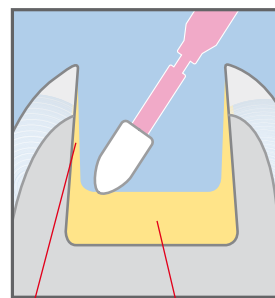
Shade coordination of Beautiful II and Beautiful Flow



The self-etching, two-step bonding system **FL-Bond II** also contains fluoride releasing S-PRG fillers and, in combination with Beautiful II, enhances the release of fluoride. FL-Bond II Primer is free of HEMA and acetone. FL-Bond II Bonding Agent is radiopaque and, thanks to its flowable consistency, easy to apply.

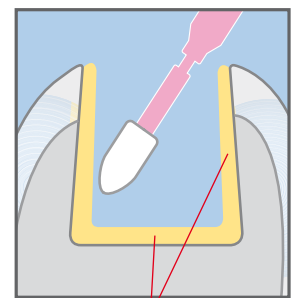


Low viscosity
(other bonding agent)



Extremely thin bonding layer
Collection of liquid at cavity floor

Moderate viscosity
(FL-Bond II)



Equal bonding layer thickness

Order information



BEAUTIFIL II - 6 Color Set

- 6 Beautifil II syringes (A2, A3, A3.5, B2, A3O, Inc), 4.5 g each
- 1 Dura-White Stone (FL2)
- 1 Super-Snap Single Kit
- 1 OneGloss Trial Set
- paper pad

PN 1775

PN 1776 **Tips** (6x 20 tips at 0.25 g each)

BEAUTIFIL II - Cosmetic Kit

- 3 Beautifil II syringes (A2, A3, Inc), 4.5 g each
- 1 syringe Beautifil Flow F02 (A2), 2 g
- 1 syringe Beautifil Opaquer (LO), 2 g
- 1 Dura-White Stone (FL2)
- 1 Super-Snap Single Kit
- 1 OneGloss Trial Set
- 10 syringe tips
- paper pad

PN 1777



BEAUTIFIL II

Syringes 4.5 g each / **Tips** 20 pcs, 0.25 g each

Shade	PN	
	Syringes	Tips
A1	1401	1752
A2	1402	1753
A3	1403	1754
A3.5	1404	1755
A4	1405	1756
B1	1408	1759
B2	1409	1760
B3	1410	
C2	1412	1763
C3	1413	
Inc (Incisal)	1415	1766
BW (Bleaching White)	1416	1767
A2O (opacious A2)	1419	1770
A3O (opacious A3)	1420	1771

OneGloss Set

One step finishing and polishing system of silicone polishers for composite restorations

PN 0180



SHOFU INC. 11 Kamitakamatsu-cho, Fukuine, Higashiyama-ku, Kyoto 605-0983, Japan
EC REP SHOFU DENTAL GmbH Am Brühl 17, 40878 Ratingen, Germany, www.shofu.de

SHOFU is a registered trademark of SHOFU INC. All other trademarks and registered trademarks are the property of their respective holders. SHOFU INC. reserves the right to change specifications without notice.

Official Partner



Minimally Invasive
Cosmetic Dentistry